

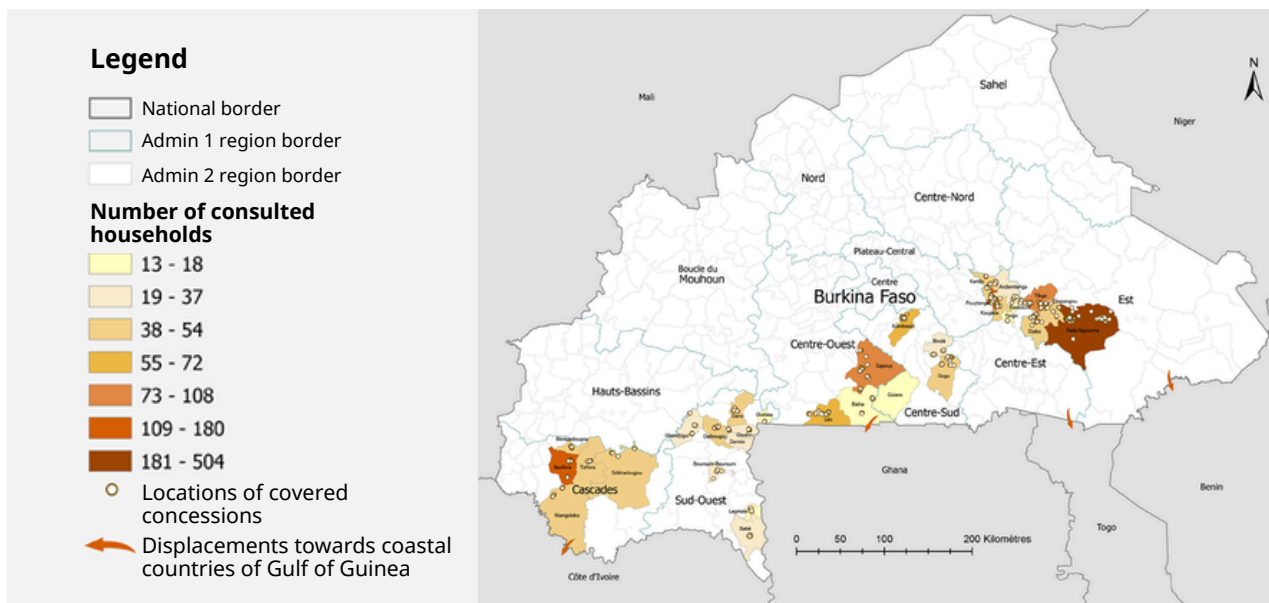
PROJECT 21



BETWEEN DISPLACEMENT AND HOSTING: SITUATION OVERVIEW IN BURKINA FASO, 2024

What is life like today for internally displaced persons (IDPs) and host communities in Burkina Faso? In 2024, a large-scale quantitative survey was conducted across six regions near the southern border of Burkina Faso, areas that host significant numbers of internally displaced persons (IDPs). Beyond these specific regions, the socio-economic and protection data collected offer critical insights into patterns of vulnerability and resilience at a national scale.

The full analysis is structured around three central themes: multidimensional poverty, food insecurity, and intentions and conditions of return. These findings are the result of a close collaboration between [UNHCR](#) and [INSD](#), built on mutual trust and strong institutional commitment.



Geographic coverage of the socioeconomic survey

MULTIDIMENSIONAL POVERTY

Multidimensional poverty affects the vast majority of surveyed households. While the level of deprivation is relatively similar across male- and female-headed households, strong disparities appear between **rural and urban areas**. The most significant divide is observed between IDP households and those from host communities. Poverty plays a complex role in return dynamics: for some, hardship in host communities forces them to consider returning, even under difficult conditions; for others, poverty prevents them from returning due to lack of resources needed to rebuild their lives in areas of origin.

8 out of 10 people are affected by poverty

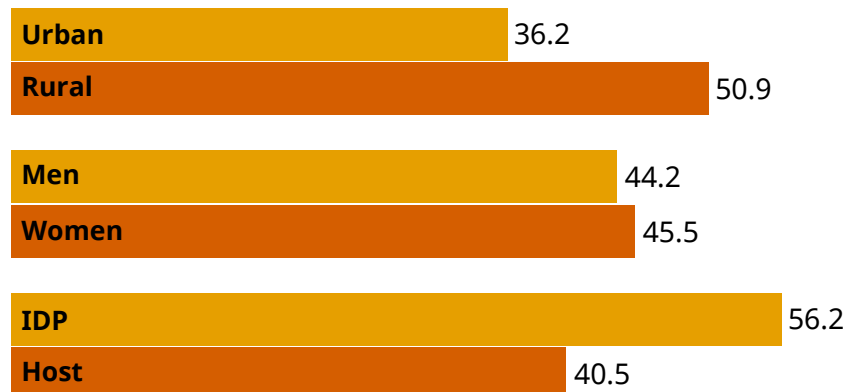


Figure 1: MPI by environment, gender, and status

Understanding the Multidimensional Poverty Index (MPI)

The Multidimensional Poverty Index measures deprivation across several dimensions of well-being, going beyond income alone. In Burkina Faso, the index is calculated using the Alkire-Foster methodology. A higher score indicates deeper and more severe poverty.

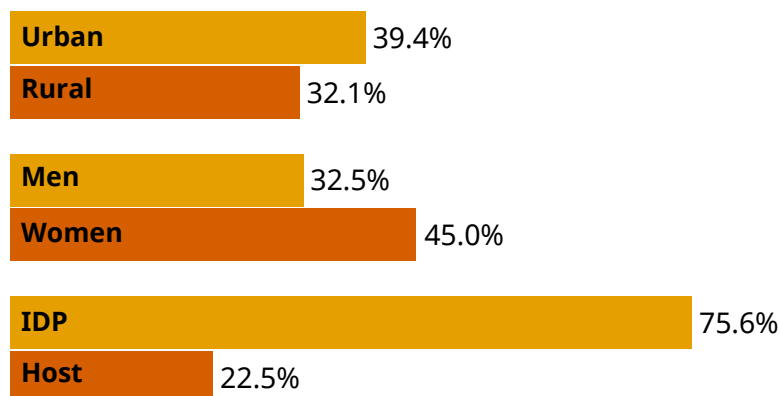
*See methodology in full report (French)

PROJECT 21



FOOD INSECURITY

More than 1/3 of all surveyed households face moderate or severe food insecurity. To cope with these pressures, families rely on **various strategies**, including borrowing money, reducing savings, and cutting essential expenses (particularly in health and education). Existing social protection mechanisms—such as free healthcare for children and pregnant women, and school meal programmes—provide some relief. Nonetheless, the findings highlight the urgent need to adapt and strengthen programmatic responses to prevent further deterioration of households' resilience capacities.



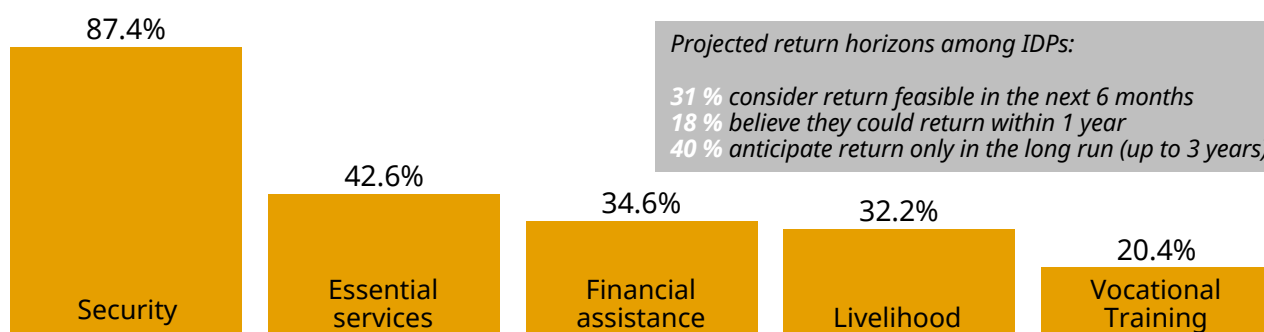
« Food security is defined when all people, at all times, have physical and economic access to sufficient, safe, and nutritious food that meets their dietary needs and food preferences for an active and healthy life.»

World Food Summit (1996)

Figure 2: Levels of moderate and severe food insecurity

INTENTIONS AND CONDITIONS OF RETURN

At the time of the survey, most displaced households expressed limited willingness to return to their areas of origin. Intentions to return are shaped by overlapping socio-economic and security constraints, suggesting that return decisions are not driven by a single factor but by the **accumulation of multiple vulnerabilities**. Main conditions identified by respondents for their potential return include: improved security conditions, ability to retrieve land and property, opportunity to resume agricultural livelihoods, and economic pressures within host communities (such as rent and rising costs of living).



Projected return horizons among IDPs:

- 31 % consider return feasible in the next 6 months
- 18 % believe they could return within 1 year
- 40 % anticipate return only in the long run (up to 3 years)

Figure 3: Main enabling conditions for a return shared by respondents

CONCLUSION

Across nearly all social and economic dimensions, IDP households experience significantly higher levels of deprivation than their host community counterparts. Gaps are particularly stark in multidimensional poverty and food security. These findings underscore the need for more comprehensive, adaptive, and well-targeted interventions to support both displaced families and the communities hosting them.

Grounded in mutual trust and shared objectives, this survey was conducted through a fruitful partnership between UNHCR and the National Institute of Statistics and Demography (INSD) of Burkina Faso, who demonstrated strong institutional commitment by mobilizing dedicated staff and resources. This collaboration culminated in the signing of a Memorandum of Understanding to further reinforce joint efforts.